

# KELVIN Test Tongs and KELVIN Test Probes

Model 2385-V001  
Model 2385-V020  
Model 2386-V001  
Model 2387-V001  
Model 2387-V020

Code:	2385 E
Manufacturer:	burster
Delivery:	ex stock
Warranty:	24 months

2385-E



- Four-wire system
- Contact profiles for a multitude of applications
- For many different test sample cross sections

## Applications

Particular attention is to be paid to the contact when measuring low value resistors of any kind. Poor contacts are generally synonymous with a considerable measurement error. The here presented Kelvin test tongs and Kelvin test probes offer a multitude of measurement possibilities for a wide range of applications. They guarantee a fault-free and simple 4 pole connection to the device being tested. In connection with the RESISTOMAT® digital ohmmeter as well as other generally available milli- and microohmmeters, these test tongs prove to be a rational and measurement quality improving accessory.

## Description

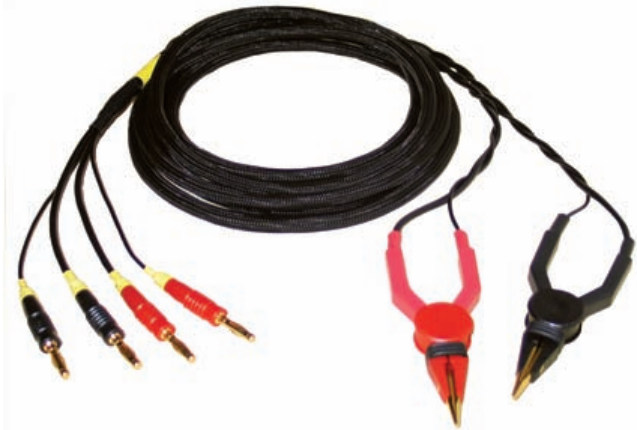
All of the Kelvin test tongs and Kelvin test probes described operate on a four-wire system. The contact on each of the two clip faces is insulated against the opposing contact. One contact is for current supply, the other one is the potential tap. The system used means that any conduction resistivity in either the branch circuit or the voltage tap has no influence on the measured result.

Model 2386 test tongs are constructed of solid nylon plates. This unbreakable material is suitable for heavy duty applications such as for test bays in the cable industry. Kelvin test probes are constructed with a turned part made of stainless steel and handles. The outer contacting and inner potential tap points are insulated against each other. The inner potential tap points are spring mounted.

## Designs

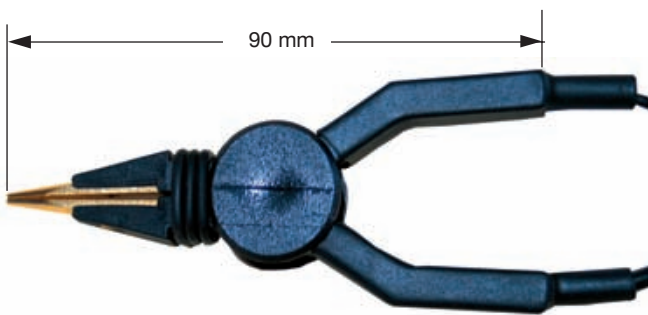
### Kelvin Test Tongs Model 2385-V001

These test tongs are ideal for resistance tests on small components and are gold-plated which helps to retain lower contact resistance. The supply leads are 3 m long and fitted with banana plugs at the end.



### Kelvin Test Tongs Model 2385-V020

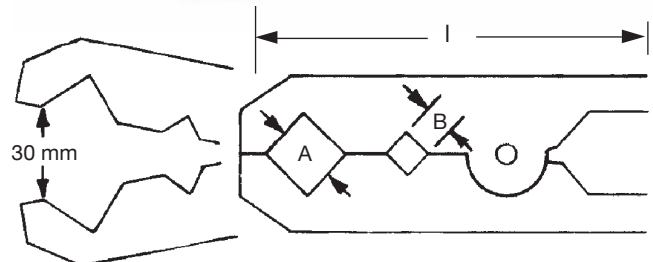
As model 2385-V001, however fitted with a 3 m lead and a 5 pin bayonet connector suitable for RESISTOMAT® models 2329 and 2316-V000X).



### Kelvin Test Tongs Model 2386-V001

These test tongs are used for the measurement of ohmic resistances in test bays on dispatch-ready cable drums as well as various test samples in production plants or test laboratories.

When using different profiles in the contacting unit it is possible to make contact on test sample cross-sections from 1 to 1000 mm<sup>2</sup>. The opening angle of the tongs and the form of the contacting profiles also permit special applications such as measurement on heavy duty transformers. The fitted supply leads are 10 m long with banana plugs.



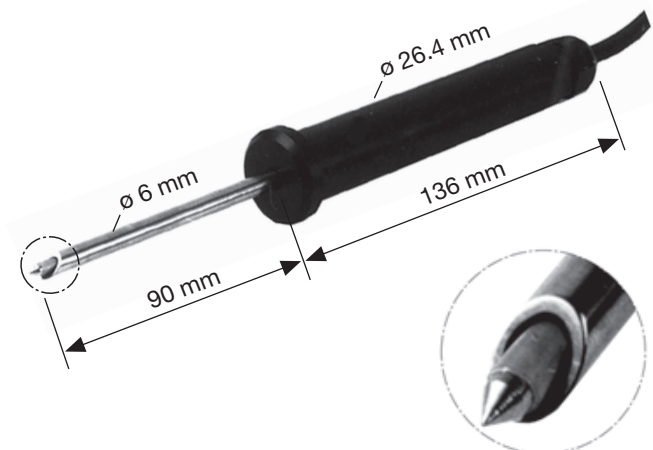
A = 20 mm, B = 11 mm, l = 255 mm

### Kelvin Test Probe Model 2387-V001

These were specially designed for contacting low-impedance test samples where contacting with test tongs is not possible (counter-sunk terminal lugs on electro motors, conductivity measurements on printed conductors, for example). The points are made of hardened steel, guaranteeing a long life span. The supply leads are 3 m long and fitted with banana plugs at the end.

### Kelvin Test Probe Model 2387-V020

As model 2387-V001, however fitted with a 5 pin connector suitable for RESISTOMAT® models 2316 and 2329.



Which KELVIN connecting cable fits which RESISTOMAT®?  
Check the following table:

Model	2304 / 2316 / 2320 / 2323	2316 / 2329
Tongs	2385-V001 2386-V001	2385-V020
Probe	2387-V001	2387-V020

## Order Information

Kelvin test tongs  
Kelvin test tongs  
Kelvin test tongs  
Kelvin test probe  
Kelvin test probe

Model 2385-V001  
Model 2385-V020  
Model 2386-V001  
Model 2387-V001  
Model 2387-V020