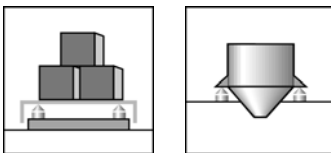


ELCB2 HS...

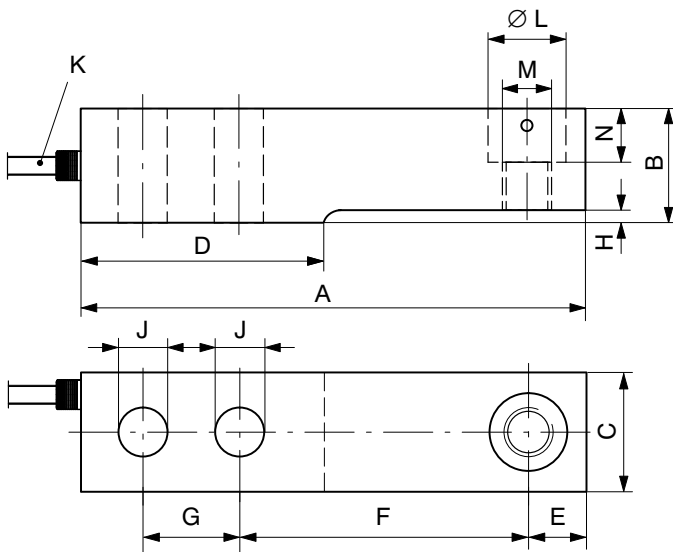
Load cells

Special features

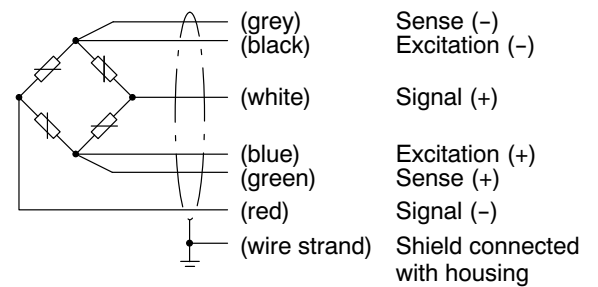
- Small dimensions
- Max. capacities: 220 kg ... 1.76 t
- Stainless steel
- Meets EMC standards (EN 45 501)
- Protection class IP 68 / IP 69K



Dimensions (in mm; 1 mm= 0.03937 inches)



Wiring code (6-wire circuit)



Max. capacity (E_{max})	A	B	C	D	E	F	G	H	J	K	Ø L	M	N
220 kg; 550 kg; 1.1 t	133.4	30.2	30.7	57.7	15.4	76.2	25.4	1.7	13	3 m	20.6	M12	14.2
1.76 t	133.4	30.2	30.7	51.7	15.4	76.2	25.4	1.7	13	3 m	20.6	M12	14.2

Specifications

Type		ELCB2 HS
Maximum capacity (E_{max})		220 kg; 550 kg; 1.1 t; 1.76 t
Accuracy class		1 %
Sensitivity (C_n)	mV/V	1.94 ± 1 %
Temperature effect on sensitivity (TK_C)	% of C_n / 10 K	± 0.4000
Temperature effect on zero balance (TK_0)		± 0.4000
Hysteresis error (d_{hy})	% of C_n	± 0.1000
Non-linearity (d_{lin})		± 0.1000
Creep (d_{cr}) over 30 min.		± 0.1000
Input resistance (R_{LC})	Ω	> 350
Output resistance (R_0)		350 ± 2
Reference excitation voltage (U_{ref})	V	5
Nominal range of excitation voltage (B_U)		0.5 ... 15
Insulation resistance (R_{is})	GΩ	> 5
Nominal temperature range (B_T)	°C [°F]	-10 ... +40 [+14 ... +104]
Service temperature range (B_{tu})		-30 ... +70 [-22 ... +158]
Storage temperature range (B_{tl})		-50 ... +85 [-58 ... +185]
Safe load limit (E_L)	% of E_{max}	150
Breaking load (E_d)		300
Lateral load limit (E_{ld})		100
Permissible dynamic load (F_{srel}) (vibration amplitude according to DIN 50100)		70
Deflection at E_{max} (s_{nom}), approx.	mm	0.5 (1.76t = 1.4mm)
Weight (G) approx.	kg	0.9
Protection class accord. to EN60529 (IEC529)		IP 68 / IP 69K
Material: Measuring element Cable entry Cable sheath Application protection (sealing)		Stainless steel Stainless steel (Gasket: Viton®) TPE hermetically sealed

Accessories (see Data sheet "HLC... - Load Cells"):

In order to minimize error interferences due to load introduction, HBM offers various proven load introductions for this load cell type, depending on the mounting situation:

HLCB/ZFP/...T	Swivel load foot
HLCB/ZAK/1.76T	Swivel load foot (height adjustable)
HLCB/...T/ZEL	Elastomer bearing
HLCB/ZDP/...T	Elastomer bearing Easy Top
HLC/ZPU/...T	Base plate / Mounting kit

Änderungen vorbehalten.

Alle Angaben beschreiben unsere Produkte in allgemeiner Form. Sie stellen keine Beschaffenheits- oder Haltbarkeitsgarantie im Sinne des §443 BGB dar und begründen keine Haftung.

Hottinger Baldwin Messtechnik GmbH

Im Tiefen See 45 · 64293 Darmstadt · Germany
Tel. +49 6151 803-0 · Fax: +49 6151 803-9100
Email: info@hbm.com · www.hbm.com

measure and predict with confidence

