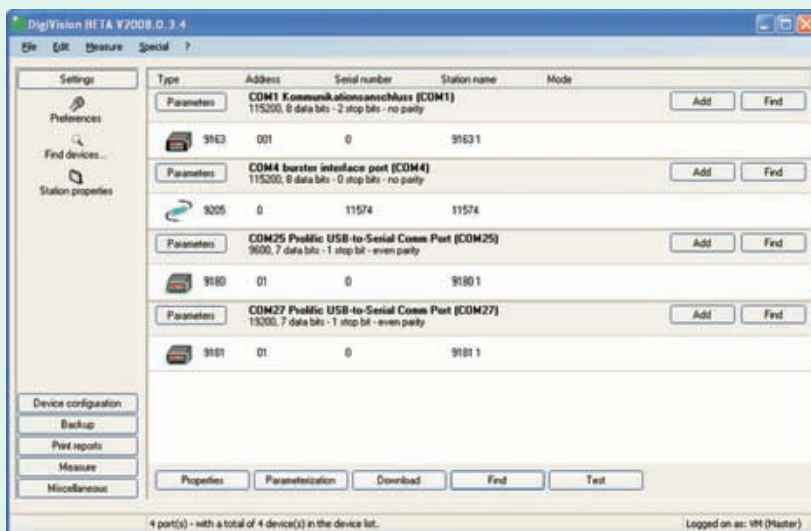


# DigiVision - One for All

One PC Software for the acquisition of measuring data supports following instrument series

**NEW**

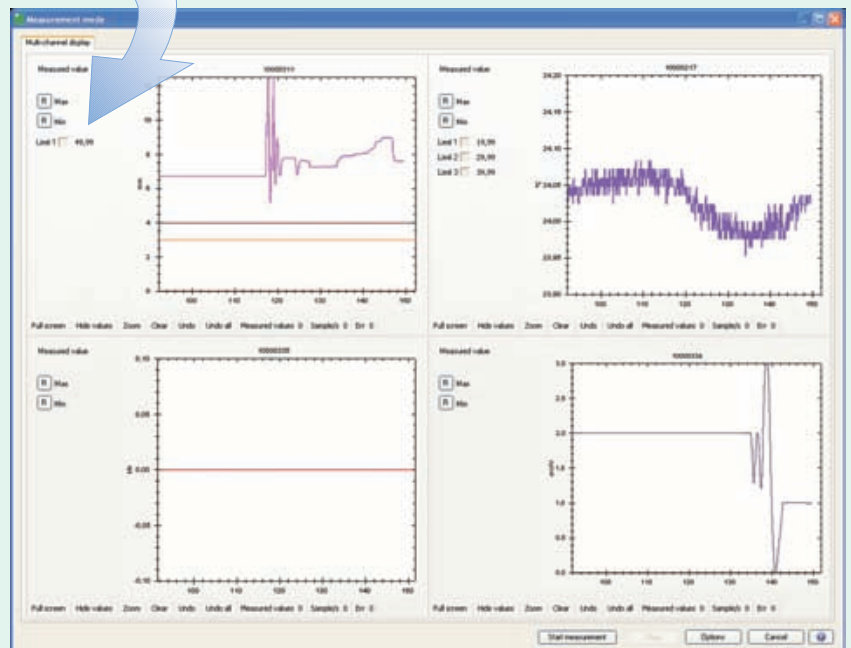
- ▶ **Sensor Master 9163**
- ▶ **DIGIMASTER 9181**
- ▶ **Digital Indicator 9180**
- ▶ **USB Sensor Interface 9205**



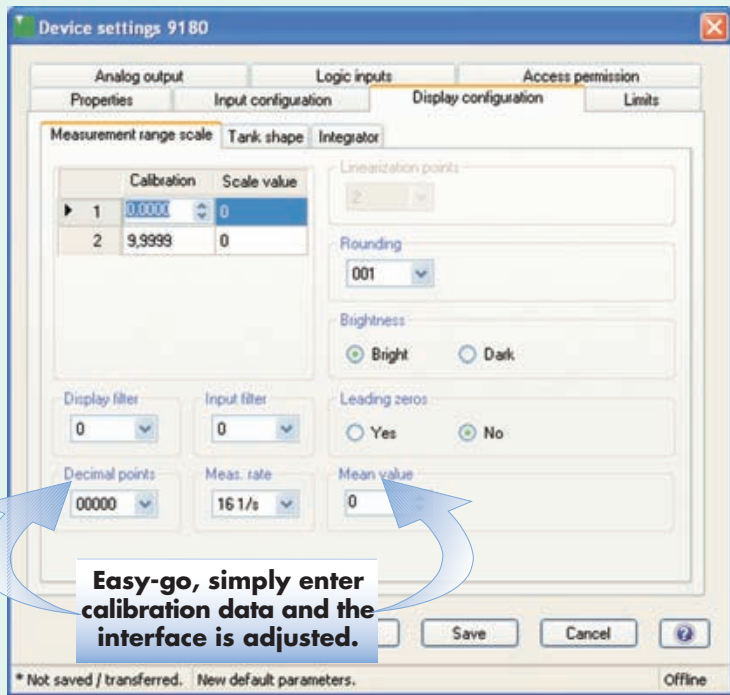
- Easy-to-handle instrument recognition
- Intuitive handling through evident and clearly structured operator interface
- Parameter setting without license code
- Automatic take-over of instrument parameters

## Show whatever you want !

- Up to 16 simultaneous measurements
- Innovative visualization tools for process parameters
- Outline of manifold process and test information



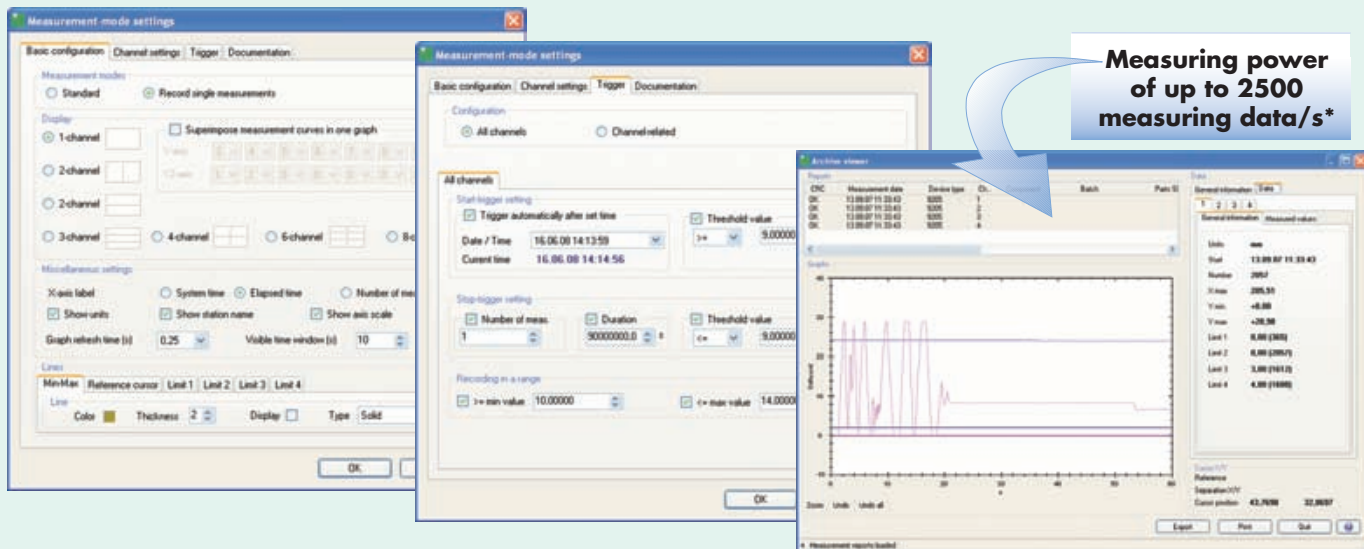
## Input mask for configuration towards the affiliated sensor



Easy-go, simply enter calibration data and the interface is adjusted.

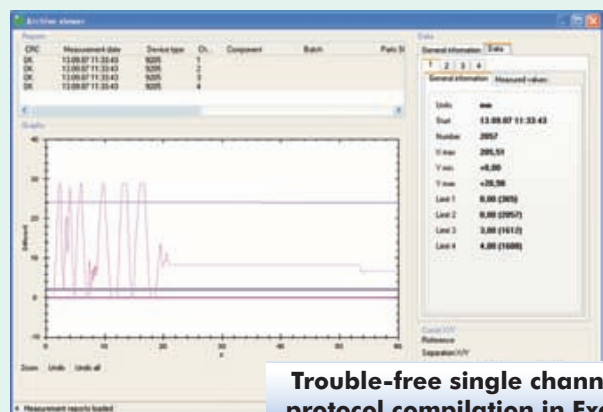
- Compilation of a device specific back-up file
- Simple parameter setting of the logic inputs (or interlinking)

## Adjustment of different options, as start/stop trigger, measuring rate; storage of the measuring data and access rights



Measuring power of up to 2500 measuring data/s\*

## Export to Excel file



Trouble-free single channel protocol compilation in Excel

\* 200 measurements/s for 9205-P001  
2500 measurements/s for 9205-P100

| burster Excel-Measvalues  |          |                   |  |
|---------------------------|----------|-------------------|--|
| Original measurement file |          |                   |  |
| Continuously file id      |          |                   |  |
| Begin                     |          |                   |  |
| Company                   |          |                   |  |
| Tester                    |          |                   |  |
| Device caption            |          |                   |  |
| Device-S/N                |          |                   |  |
| Unit                      |          |                   |  |
| Number of values          |          |                   |  |
| Measurement values        |          |                   |  |
| Counter                   | Time     | Measurement value |  |
| 1                         | 0.002280 | 0.0000            |  |
| 2                         | 0.010680 | 0.0000            |  |
| 3                         | 0.118190 | 0.0000            |  |
| 4                         | 0.218000 | 0.0000            |  |
| 5                         | 0.318390 | 0.0000            |  |
| 6                         | 0.417880 | 0.0000            |  |
| 7                         | 0.518650 | 0.0000            |  |
| 8                         | 0.618250 | 0.0000            |  |
| 9                         | 0.717440 | 0.0000            |  |
| 10                        | 0.821640 | 0.0000            |  |
| 11                        | 0.917810 | 0.0000            |  |
| 12                        | 1.018540 | 0.0000            |  |